



**Pennsylvania
Convention Center**
PHILADELPHIA

AN  **MANAGED FACILITY**

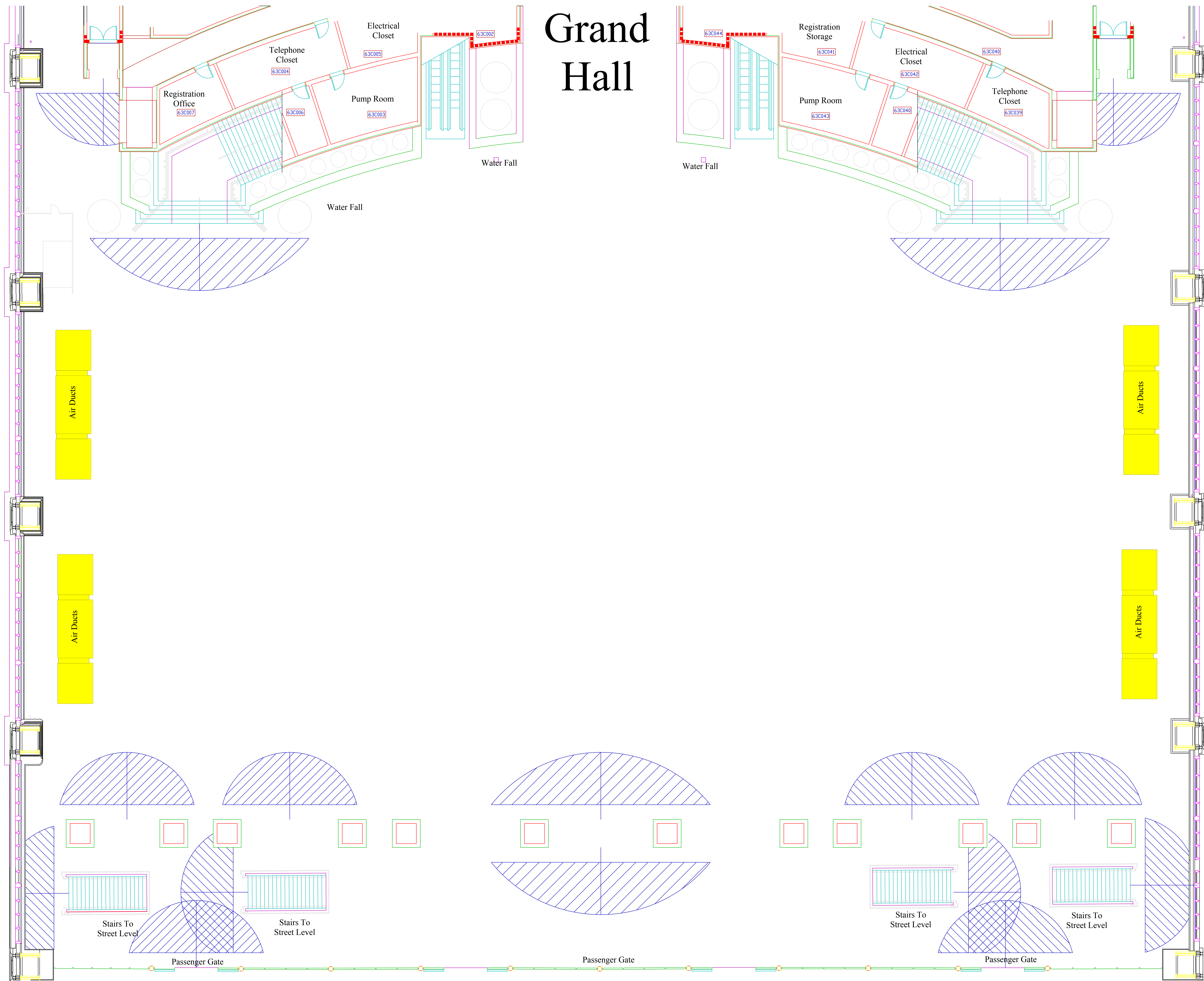
PENNSYLVANIA CONVENTION CENTER FLOORPLANS

EXHIBIT HALL LEVEL KIT

200 Level Meeting Rooms

Halls ABCDE, Grand Hall

Grand Hall



15' Clearance must be maintained in any direction from emergency exit doorways

Grand Hall

Pennsylvania Convention Center

Date: 1-31-01

Scale: 1/32" = 1'

Drawn By: Leroy McCuff

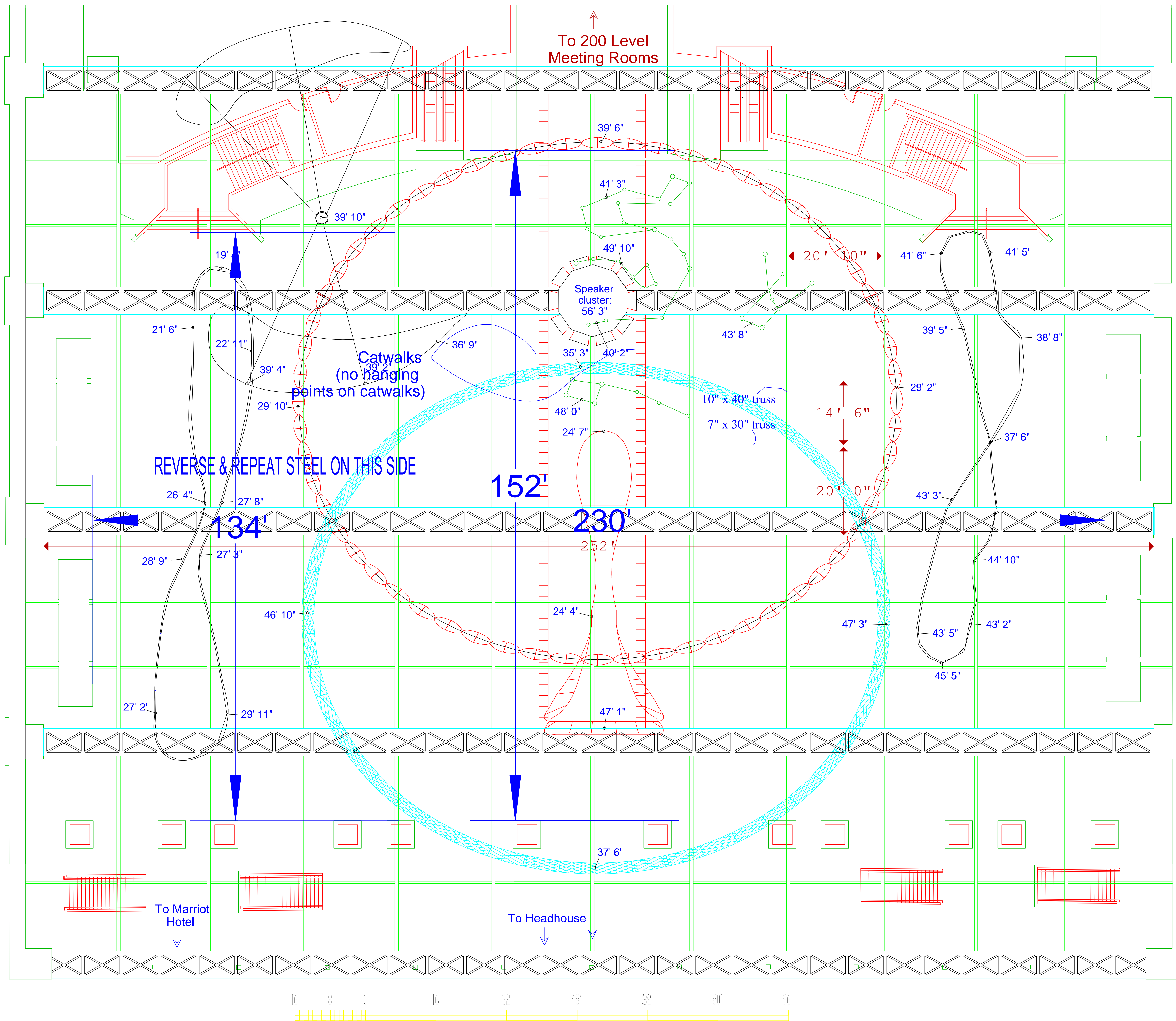
Approved By:

Room Number:

Grand Hall

File Name:

GHall_Empty



- NOTES:**
- This is a rough representation of the artwork in the Grand Hall. A site visit is strongly recommended if any rigging is planned.
- All heights indicated are low clearances in respective areas.
- Accuracy of Drawing:
Heights accurate +/- 3"
Location of artwork accurate +/- 36"
- 1) All rigging drawings to be approved in advance by PCCA.
 - 2) Rigging drawings to include total weight of suspended unit, weight per point, and bridling details.
 - 3) 4' x 4' box trusses load of 4,000# single case.
 - 4) All other points load 300# per case.
 - 5) Three cases between major truss spans.
 - 6) ALL DIMENSIONS APPROXIMATE.

Grand Hall - Reflected Ceiling Plan with Artwork

Pennsylvania Convention Center

Date: 5/7/99

Scale: 1" = 1"

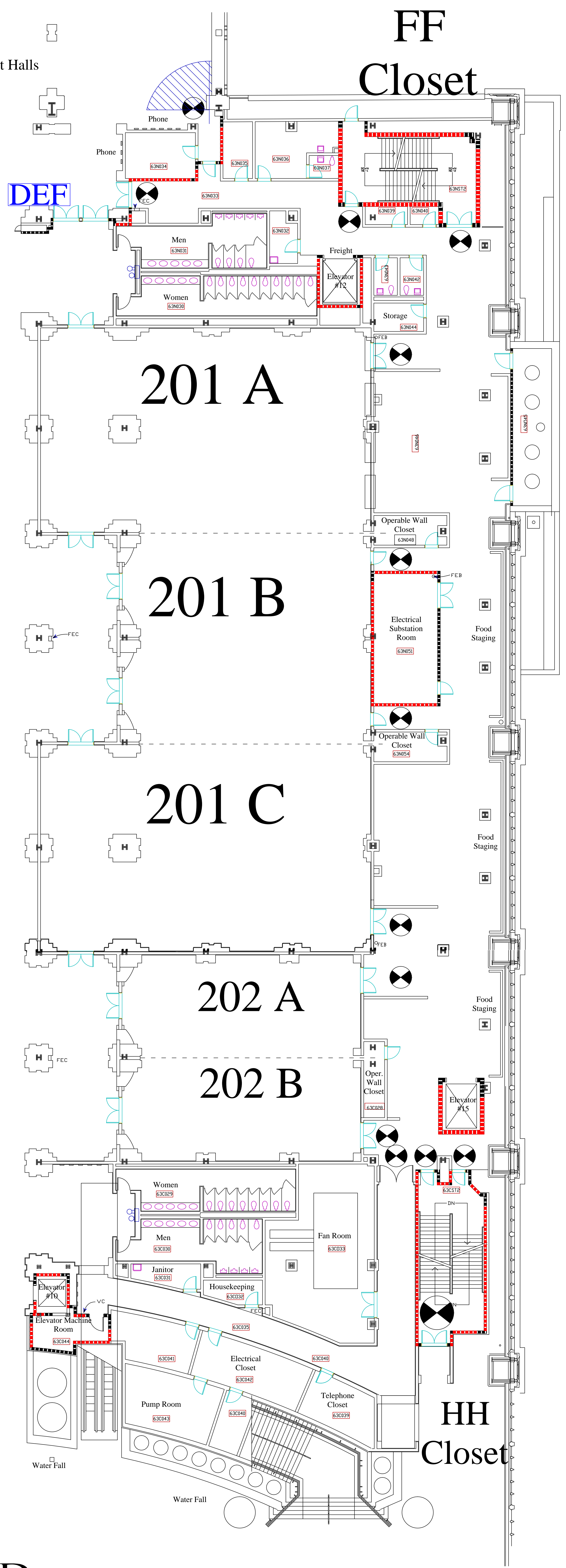
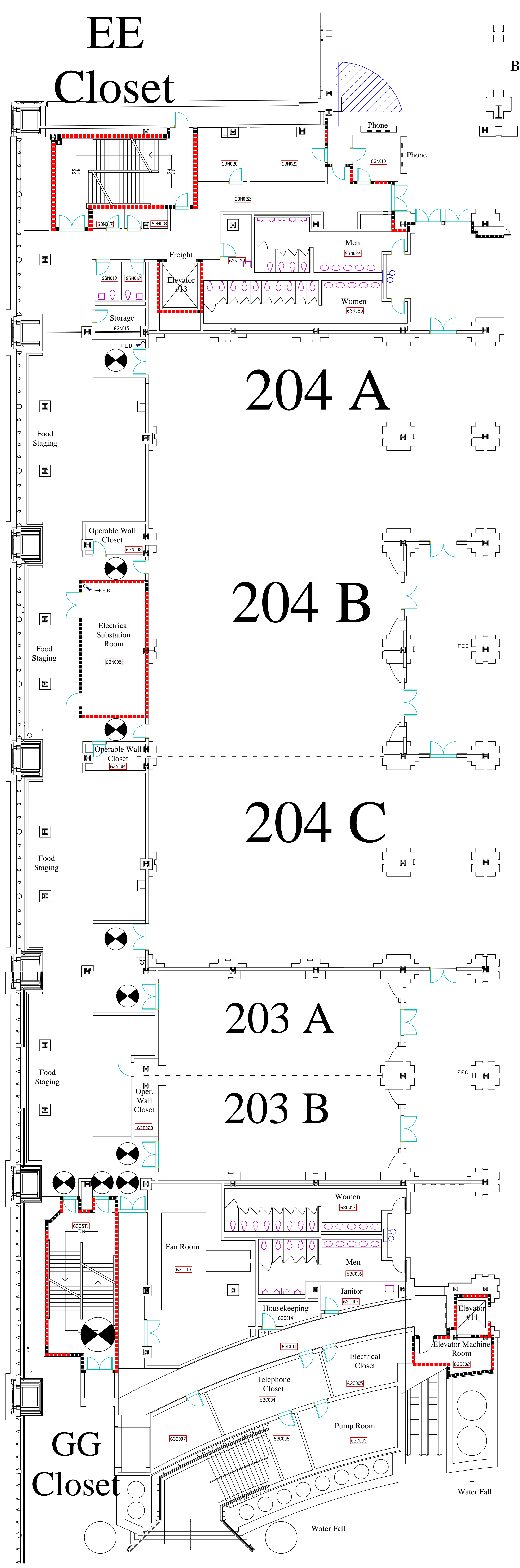
Drawn By: Conrad Bender

Room Number:

Grand Hall

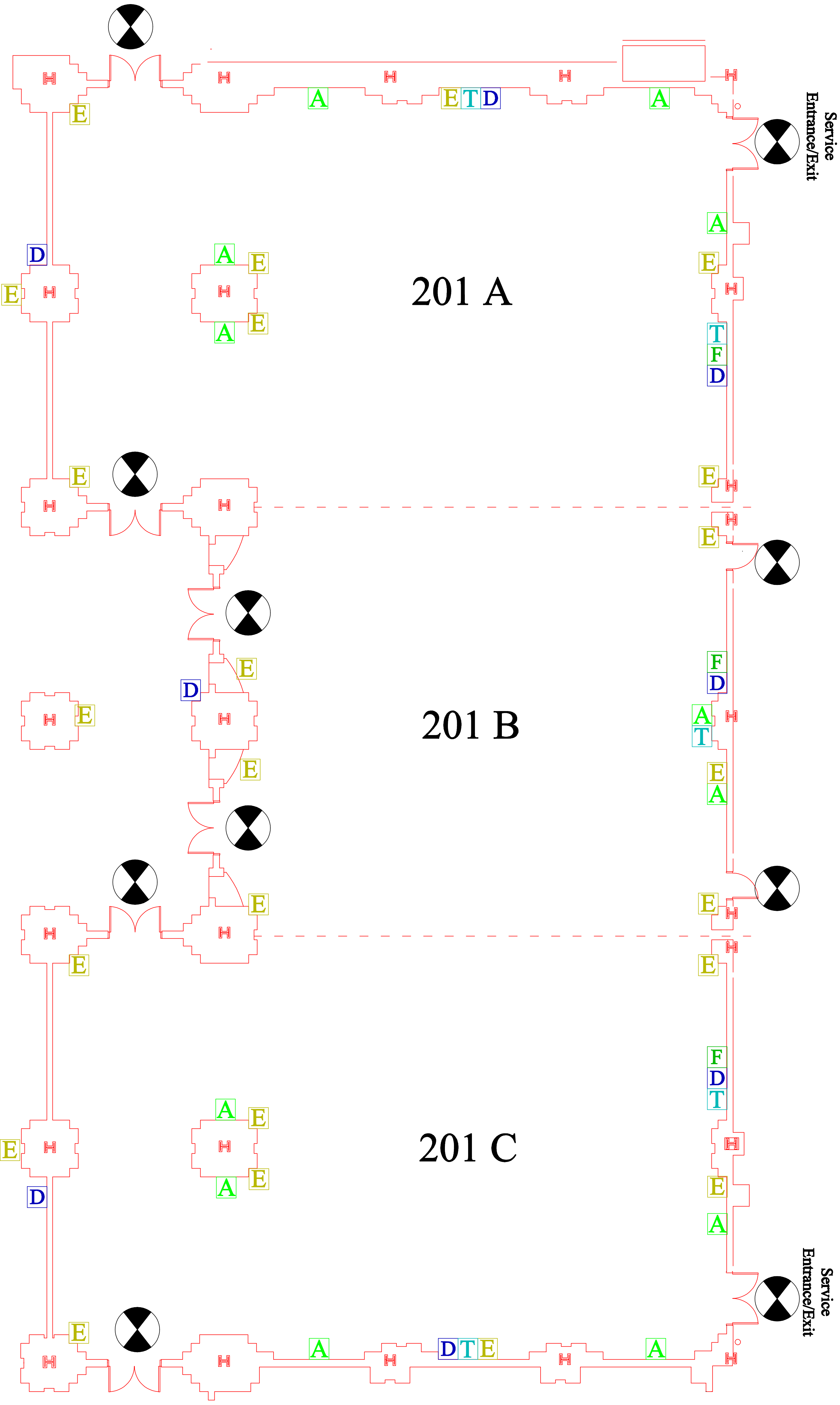
File Name:

Ghart full

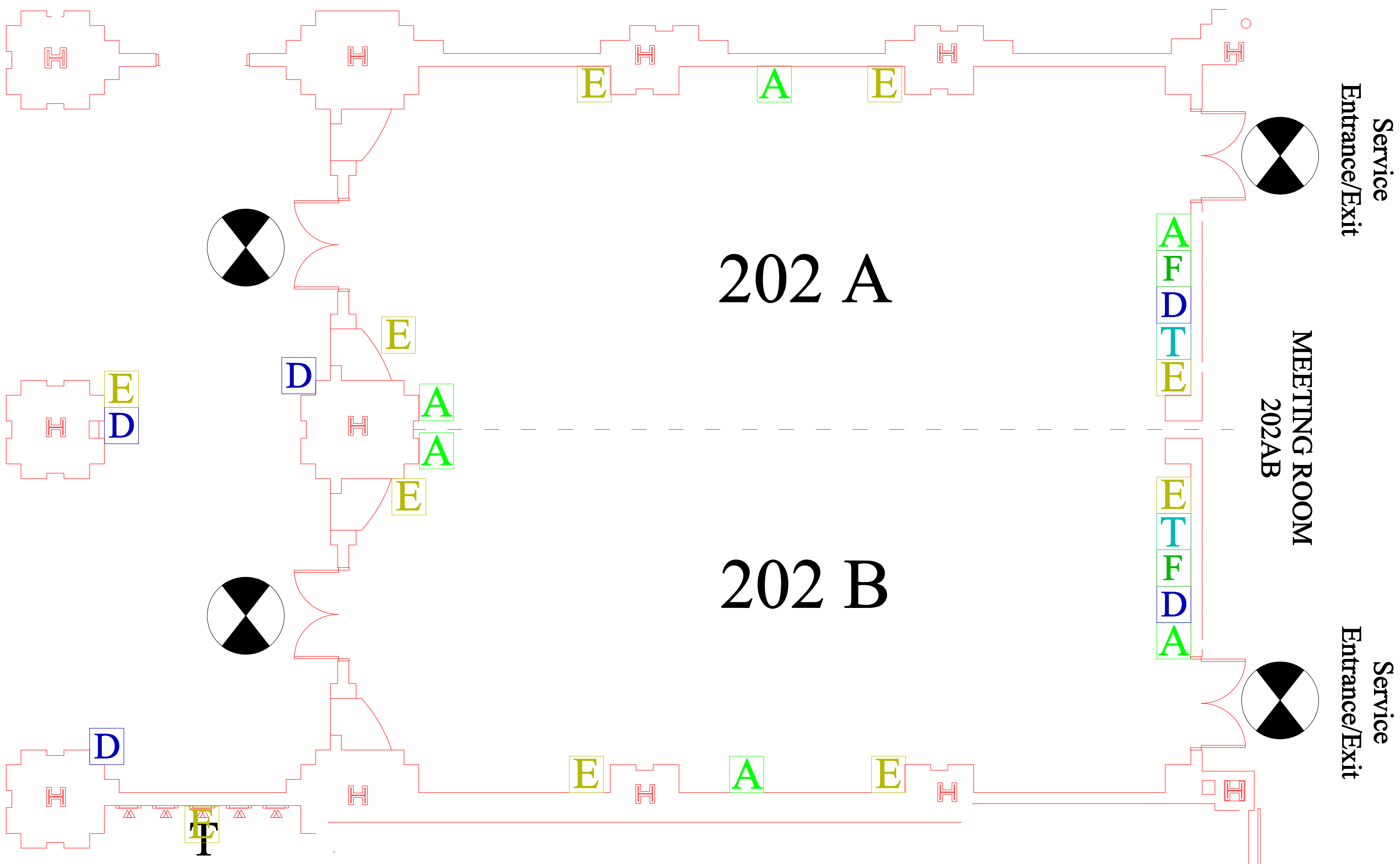


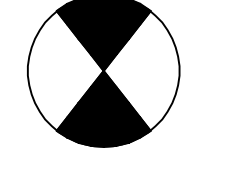
 Exit Doors
 Heart Defibrillator

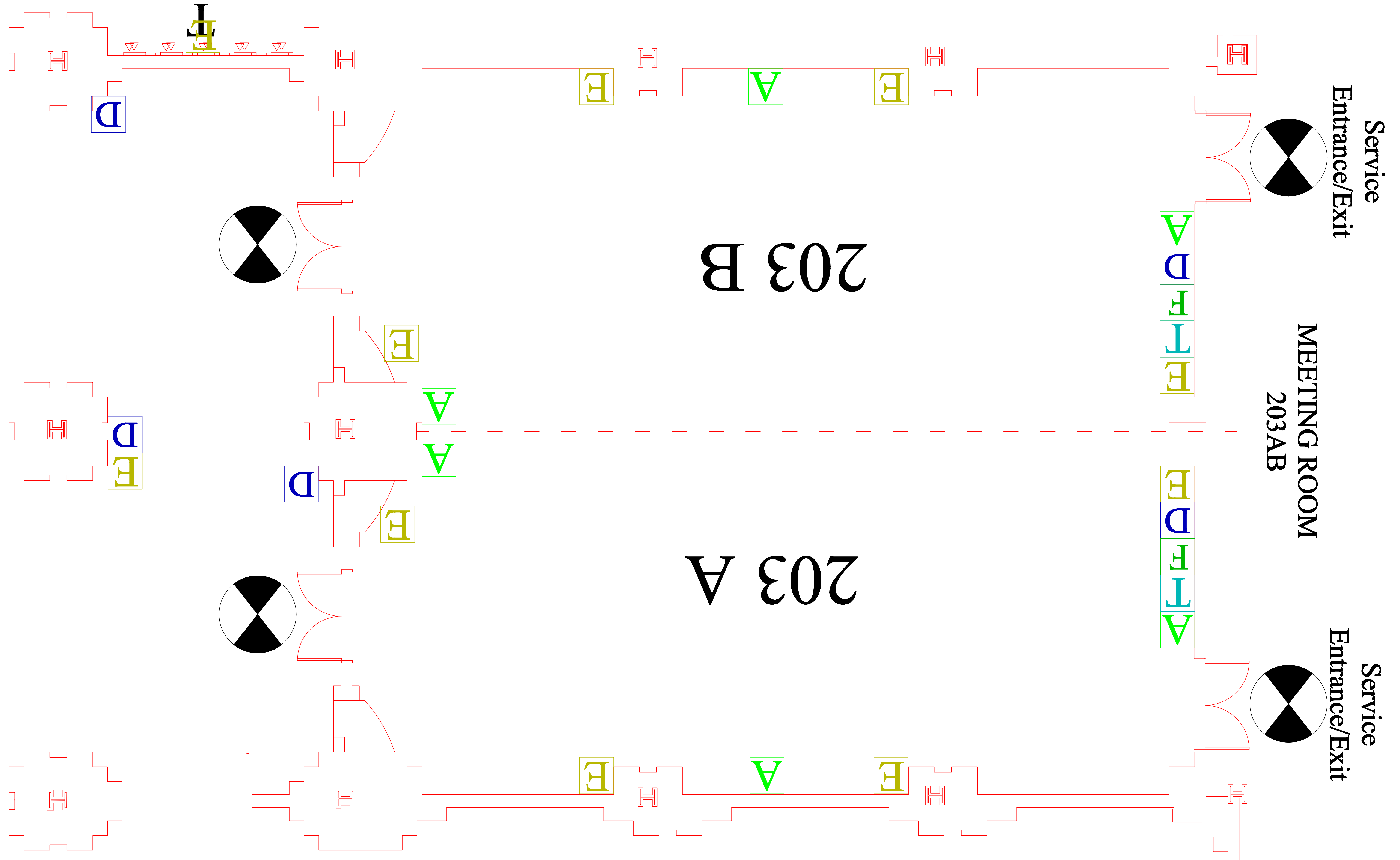
15' Clearance must be maintained in any direction from emergency exit doorways



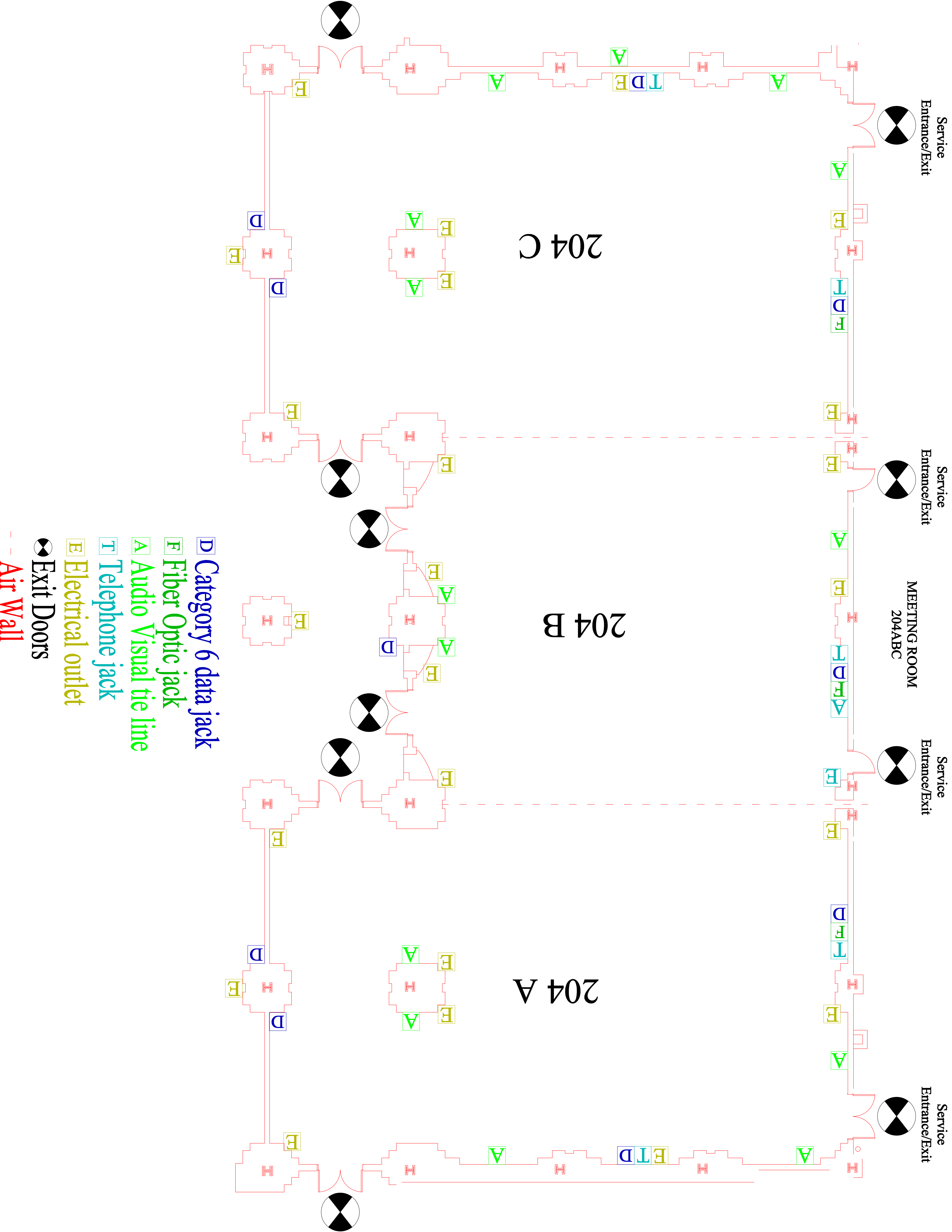
- D Category 6 data jack
- F Fiber Optic jack
- A Audio Visual tie line
- T Telephone jack
- E Electrical outlet
- Exit Doors
- Air Wall



- D Category 6 data jack
- F Fiber Optic jack
- A Audio Visual tie line
- T Telephone jack
- E Electrical outlet
-  Exit Doors
- Air Wall



- D** Category 6 data jack
- F** Fiber Optic jack
- A** Audio Visual tie line
- T** Telephone jack
- E** Electrical outlet
- X** Exit Doors
- Air Wall**



- D** Category 6 data jack
- F** Fiber Optic jack
- A** Audio Visual tie line
- T** Telephone jack
- E** Electrical outlet
-  Exit Doors
-  Air Wall

Service Entrance/Exit

Service Entrance/Exit

Service Entrance/Exit

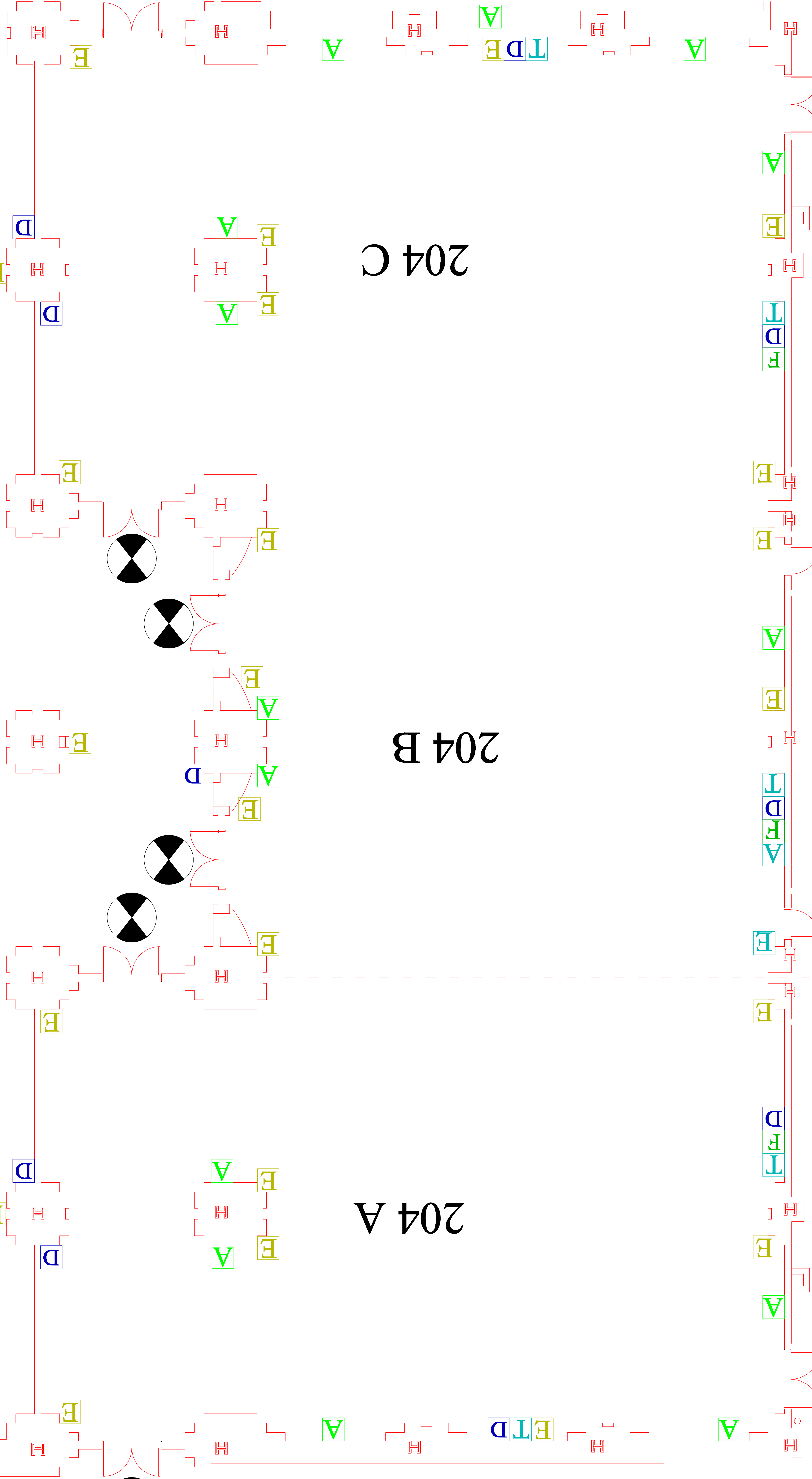
Service Entrance/Exit

MEETING ROOM
204ABC

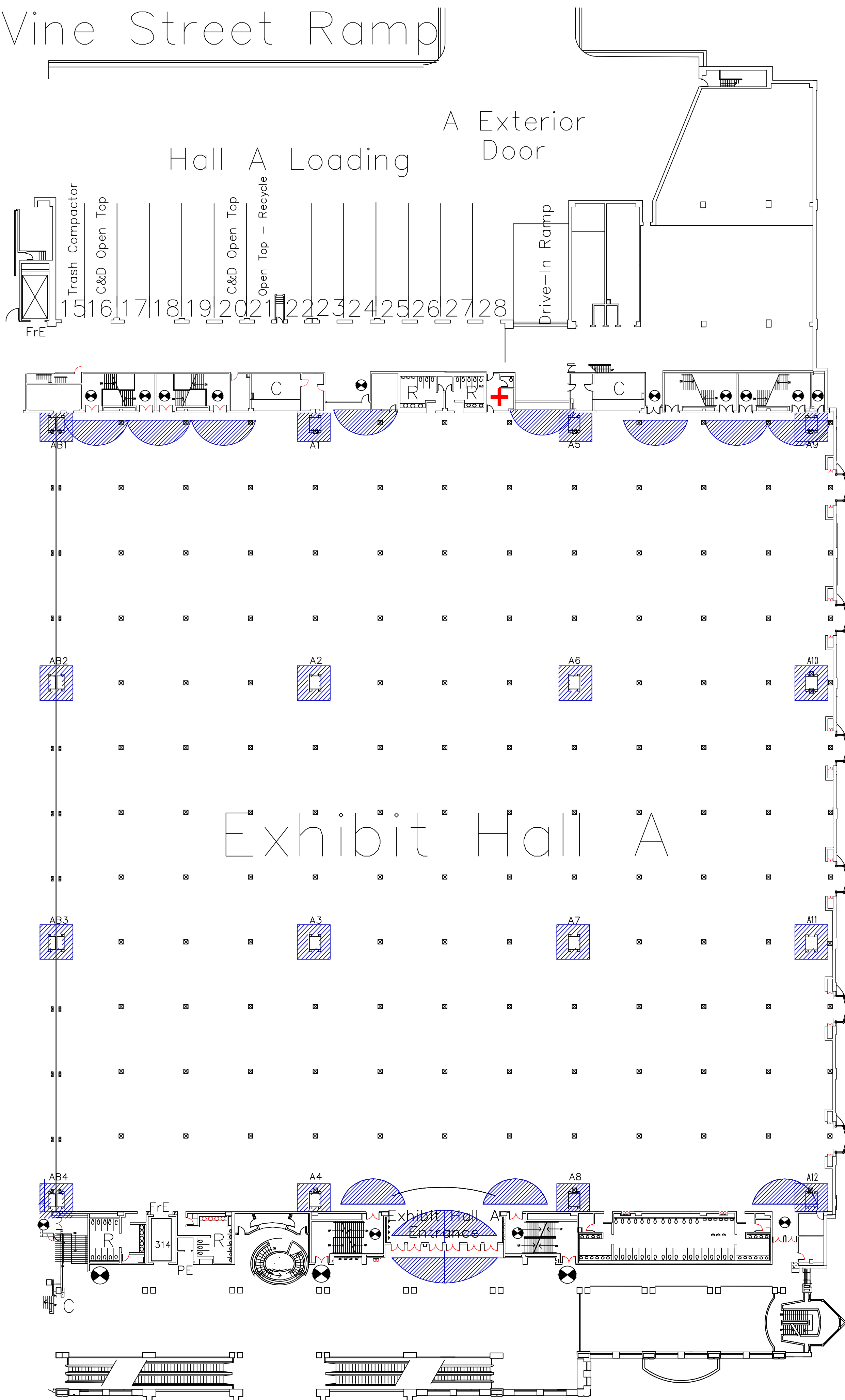
204 C

204 B

204 A



Vine Street Ramp



NOTE: Shading around columns indicates a minimum clearance of 5' on each side that must be maintained for access to electrical services and fire hose connections.
 15' Clearance must be maintained in any direction from emergency exit doorways
 Dimensions are approximate verify in field

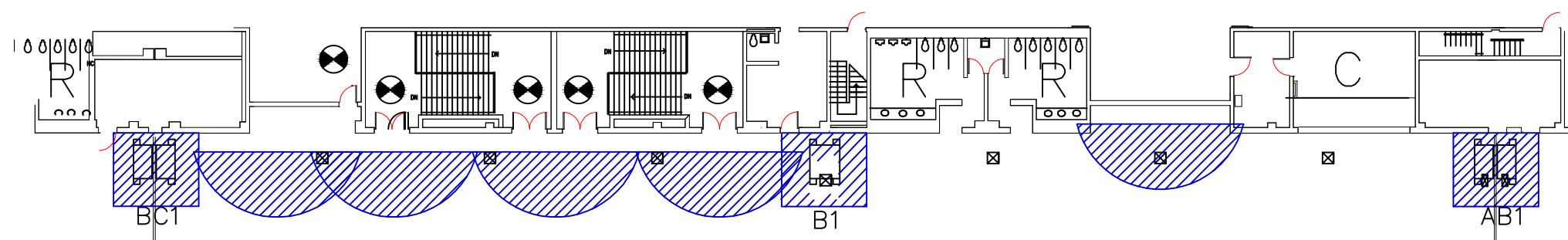
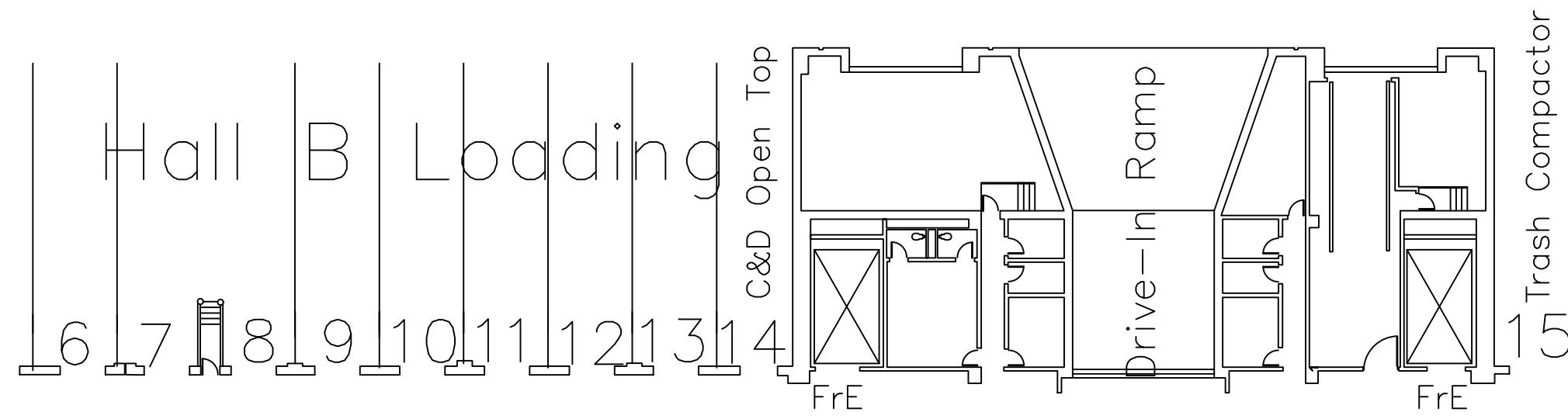
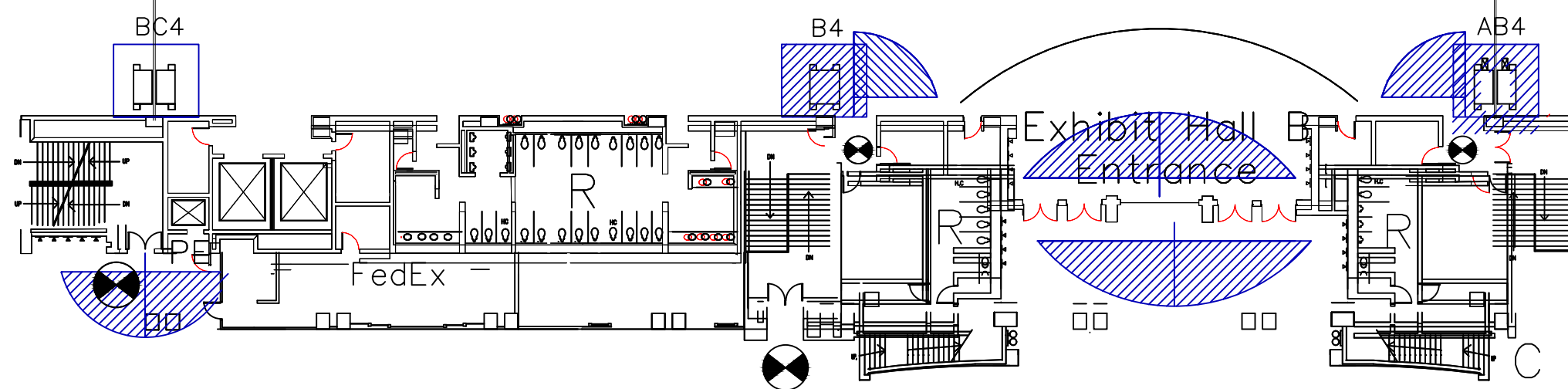


Exhibit Hall B



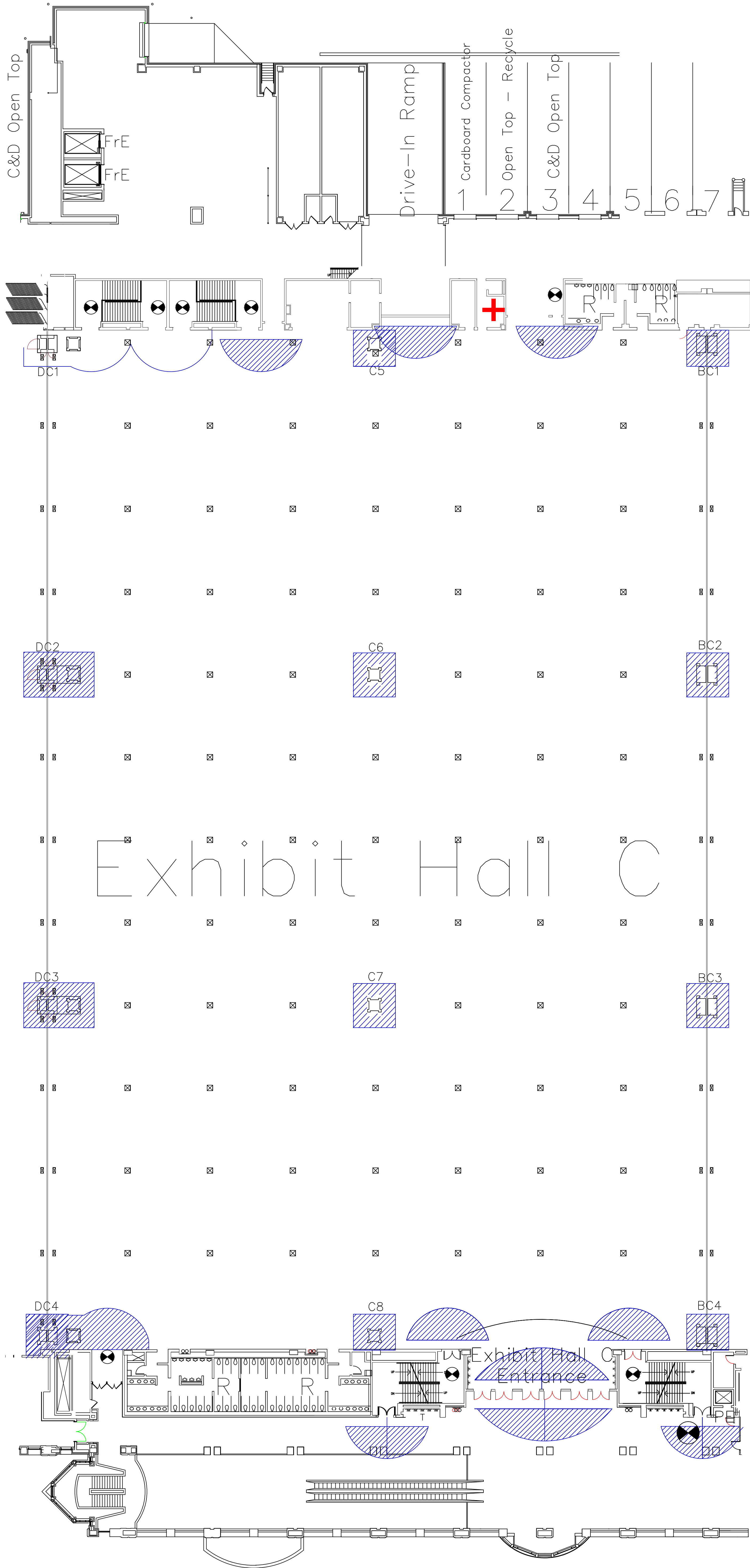
KEY

- R Restroom
- PE Public Elevator
- FrE Freight Elevator
- C Concessions
- F Fire Hose Connection
- ⊕ First Aid
- ⊗ Exit Doors
- DEF Heart Defibrillator

NOTE: Shading around columns indicates a minimum clearance of 5' on each side that must be maintained for access to electrical services and fire hose connections.

15' Clearance must be maintained in any direction from emergency exit doorways

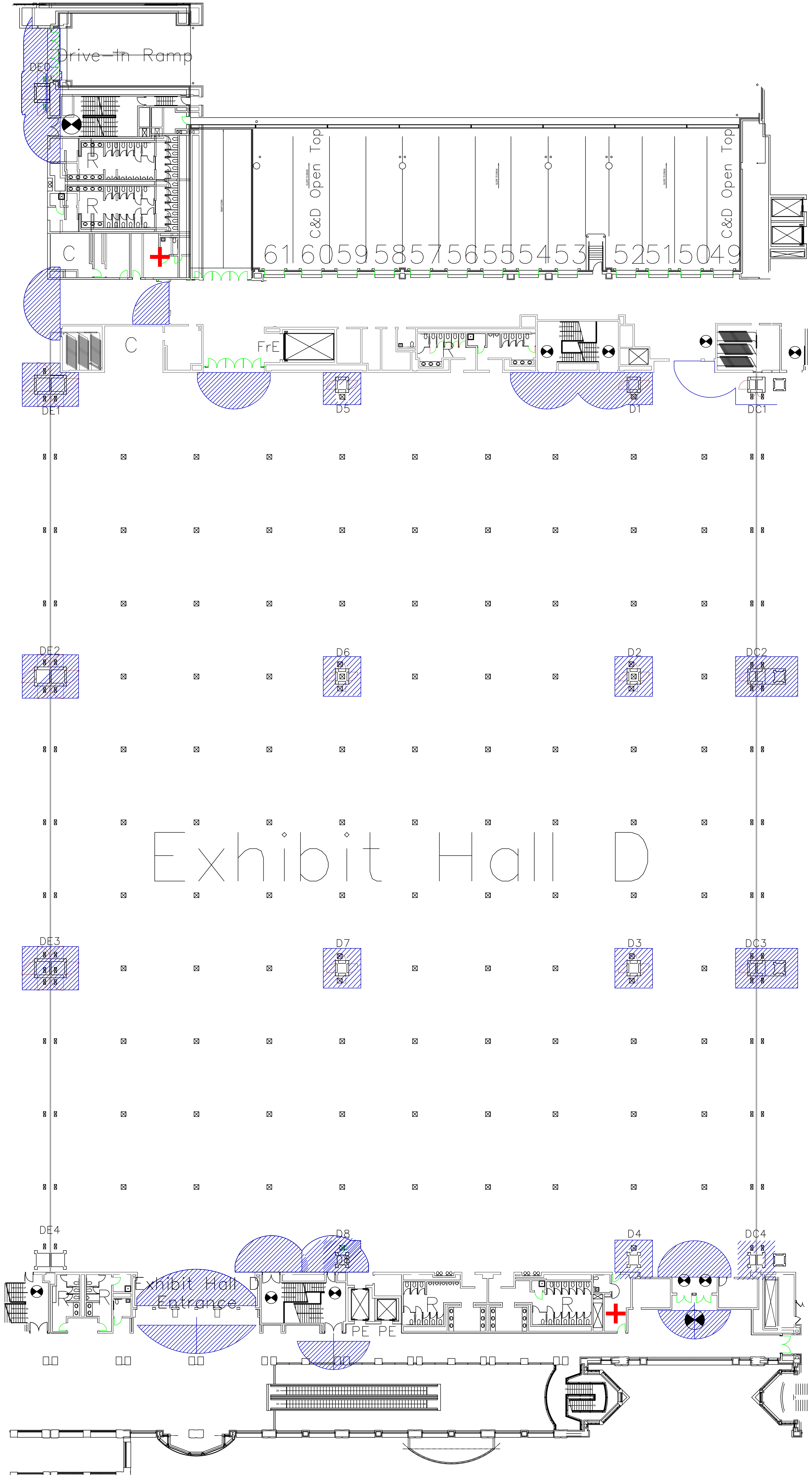
Dimensions are approximate verify in field



KEY

- R Restroom
- PE Public Elevator
- FrE Freight Elevator
- C Concessions
- F Fire Hose Connection
- ⊕ First Aid
- ⊙ Exit Doors
- DEF Heart Defibulator

NOTE: Shading around columns indicates a minimum clearance of 5' on each side that must be maintained for access to electrical services and fire hose connections.
 15' Clearance must be maintained in any direction from emergency exit doorways
 Dimensions are approximate verify in field



NOTE: Shading around columns indicates a minimum clearance of 5' on each side that must be maintained for access to electrical services and fire hose connections.

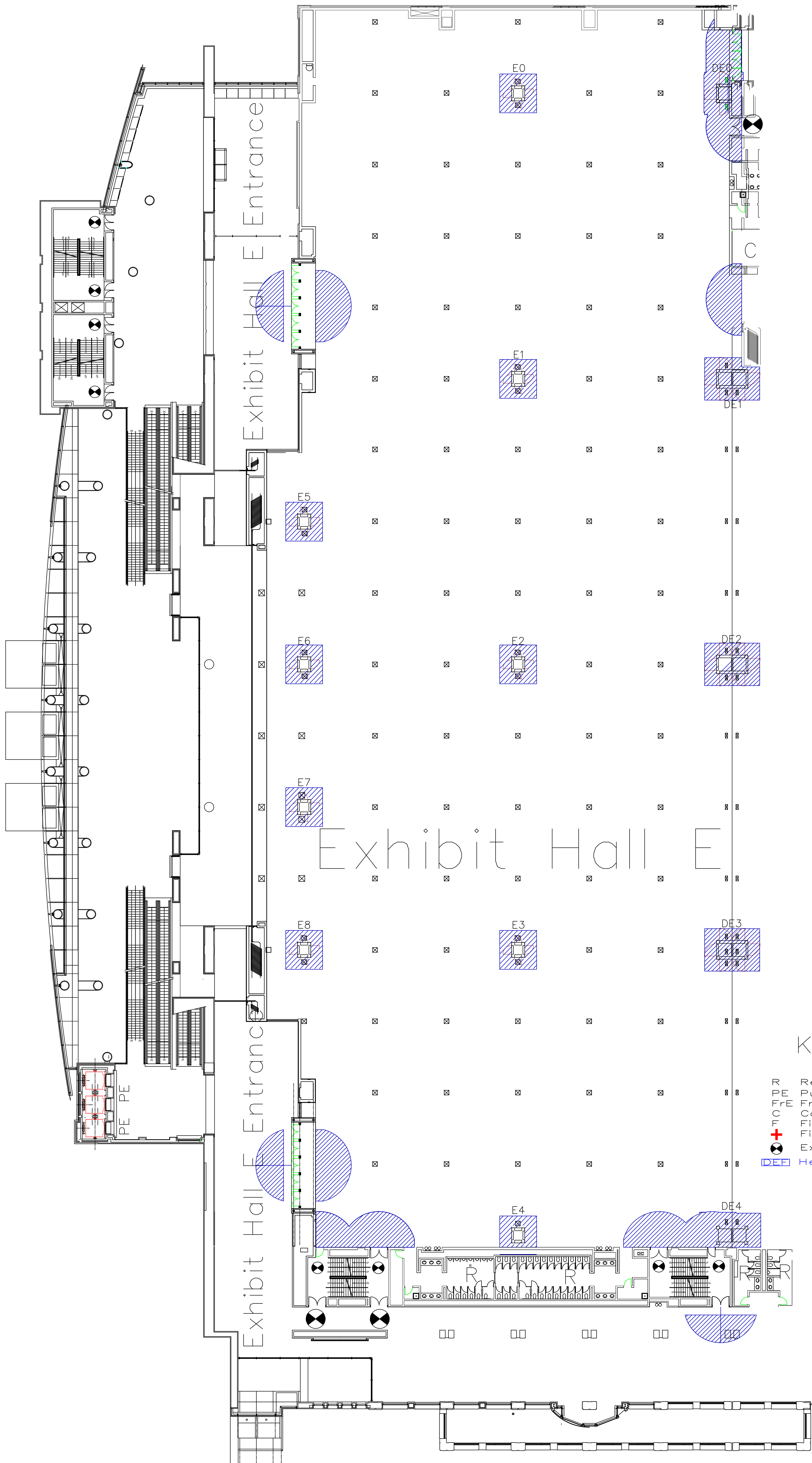
15' Clearance must be maintained in any direction from emergency exit doorways

Dimensions are approximate verify in field

KEY

- R Restroom
- PE Public Elevator
- FrE Freight Elevator
- C Concessions
- F Fire Hose Connection
- + First Aid
- ⊗ Exit Doors
- DE Heart Defibrillator

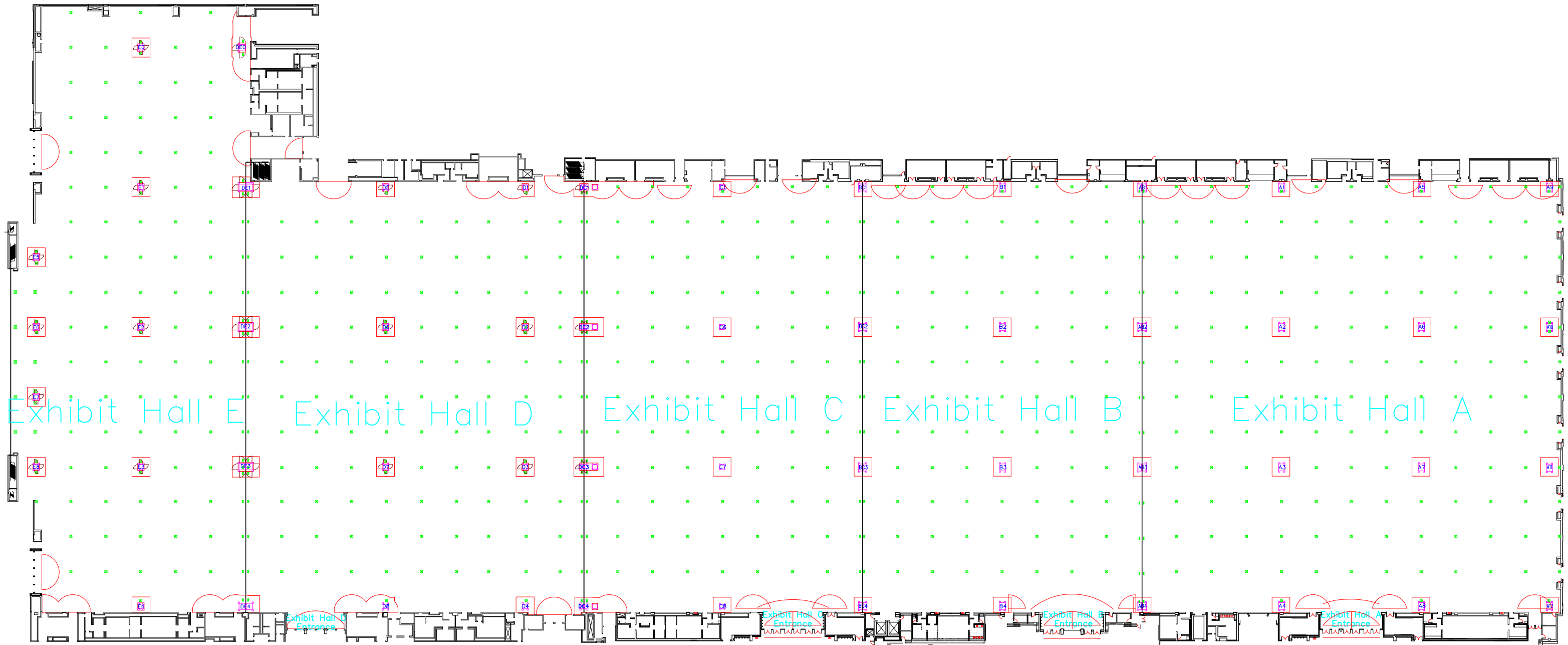
Broad Street



KEY

- R Restroom
- PE Public Elevator
- FrE Freight Elevator
- C Concessions
- FH Fire Hose Connection
- + First Aid
- Exit Doors
- DE Heart Defibrillator

NOTE: Shading around columns indicates a minimum clearance of 5' on each side that must be maintained for access to electrical services and fire hose connections.
15' Clearance must be maintained in any direction from emergency exit doorways
Dimensions are approximate verify in field



NOTE: Shading around columns indicates a minimum clearance of 5' on each side that must be maintained for access to electrical services and fire hose connections.